

Data analysis to inform a JSNA on End of Life Care

London Boroughs of
Hammersmith and Fulham
Kensington and Chelsea
Westminster

Andrew Rixom, Senior Public Health Analyst

Rianne van der Linde, Public Health Analyst

Colin Brodie, Public Health Knowledge Manager

Bridgette Moess, Commissioning Manager

Jessica Nyman, JSNA Manager

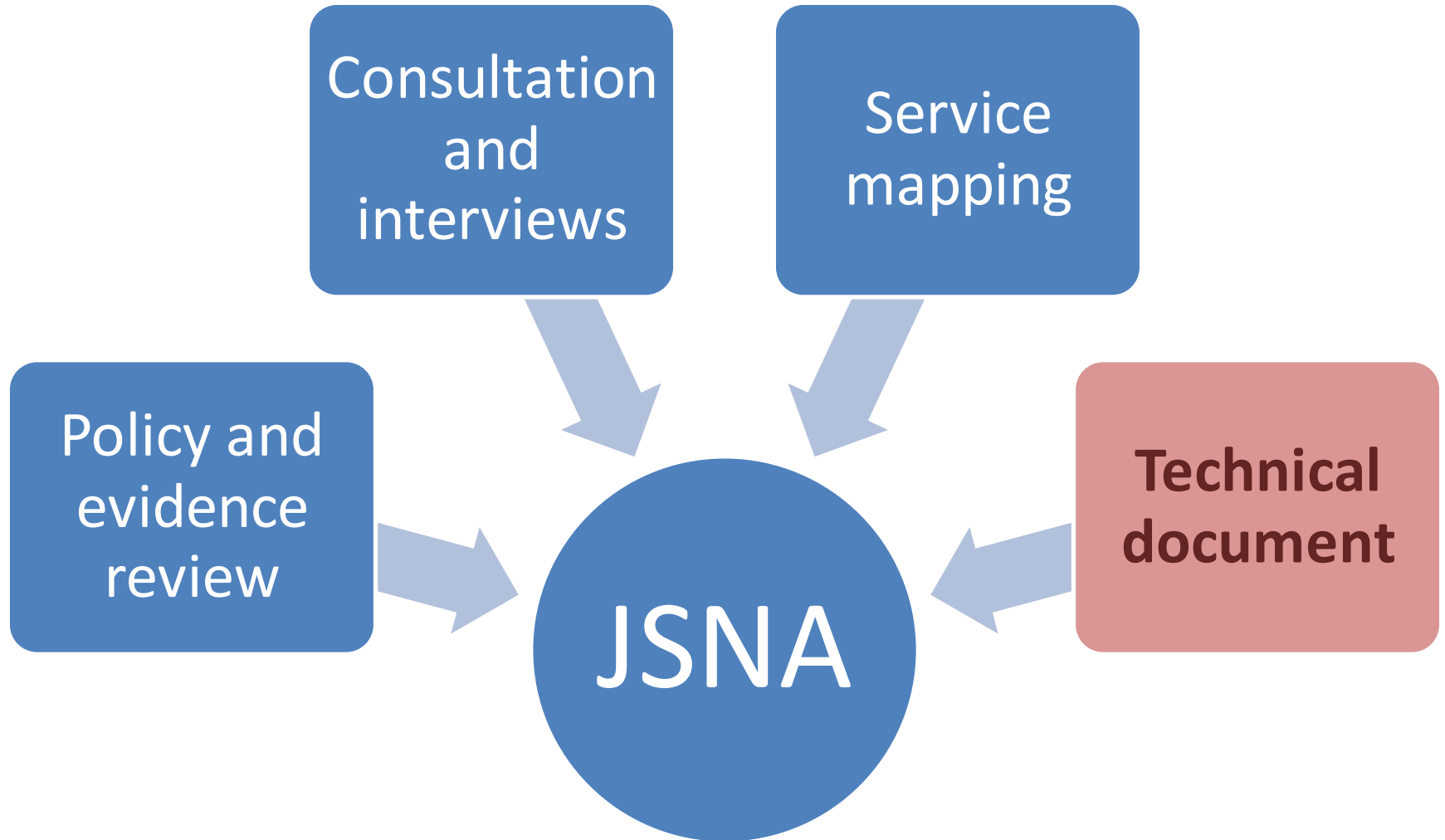
18 February 2015

London public health knowledge and intelligence network

Outline

- JSNA process
- Population and number of deaths
- Place of death
- Deaths among hospice patients
- Deaths in hospital
- End of Life Care JSNA
- Questions and discussion

JSNA on End of Life Care - process

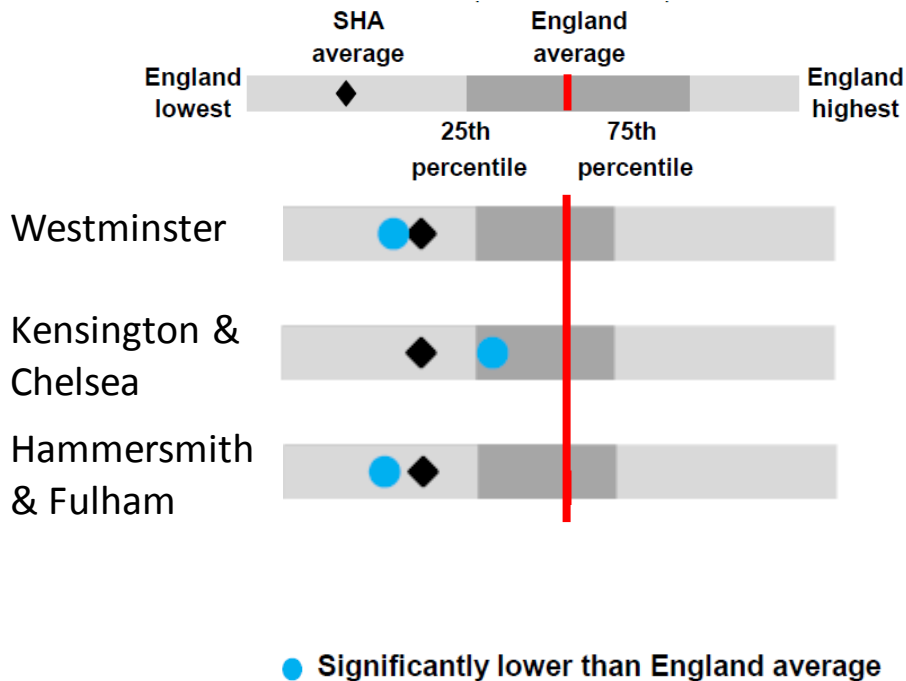


Population and number of deaths

Population

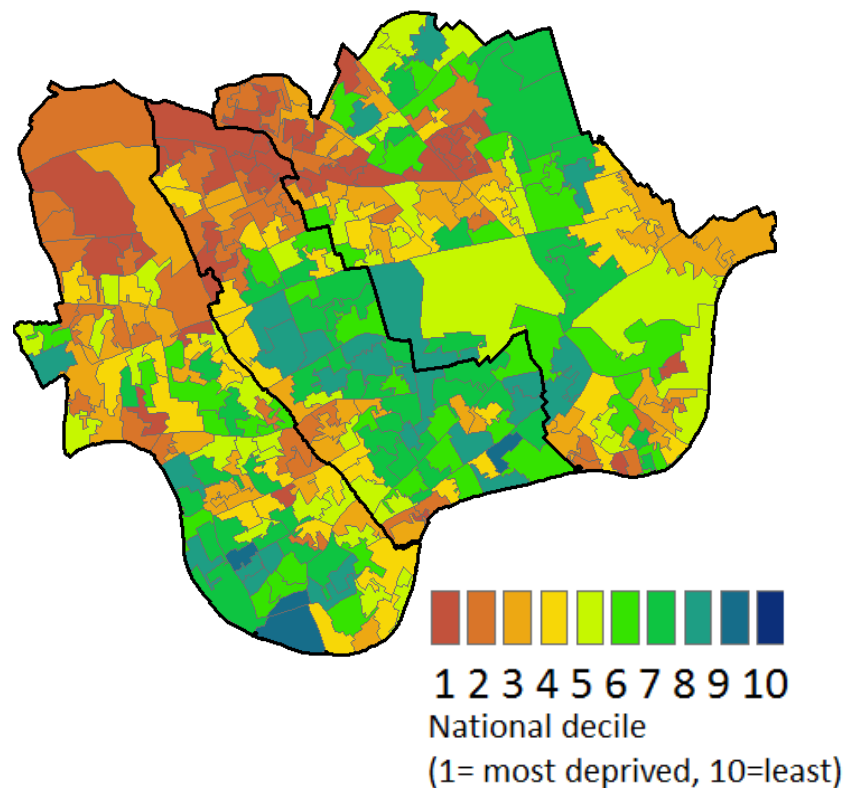
➤ Young population (as other London boroughs)

Percentage aged 65 years and over



➤ Deprived areas

Index of multiple deprivation, 2015



Population

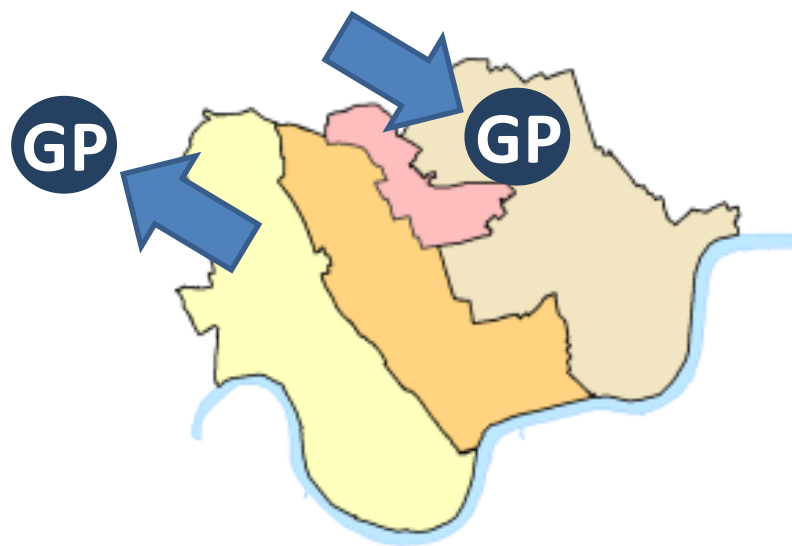
- Resident LA
- Resident CCG



- London Borough of Hammersmith & Fulham
- Hammersmith & Fulham CCG
- Royal Borough of Kensington and Chelsea
- West London CCG
- Westminster City Council
- Central London CCG
- Queens Park and Paddington

Population

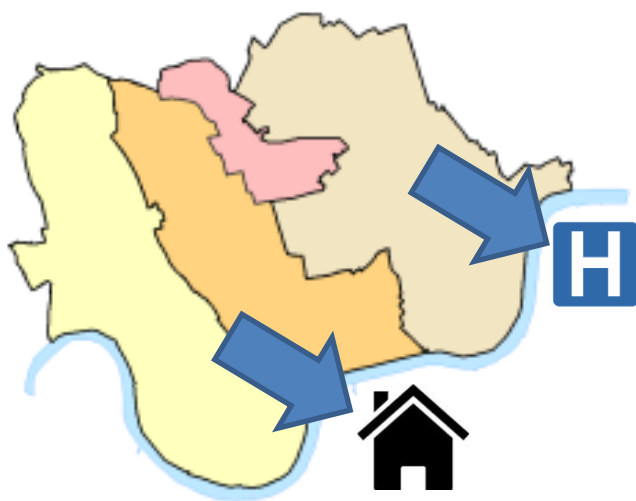
- Resident LA
- Resident CCG
- Registered
 - Residents who are registered
 - Registered who are not resident
 - Residents who are registered elsewhere
 - Not resident and not registered



- London Borough of Hammersmith & Fulham
- Hammersmith & Fulham CCG
- Royal Borough of Kensington and Chelsea
- West London CCG
- Westminster City Council
- Central London CCG
- Queens Park and Paddington

Population

- Resident LA
- Resident CCG
- Registered
- People may die anywhere the country



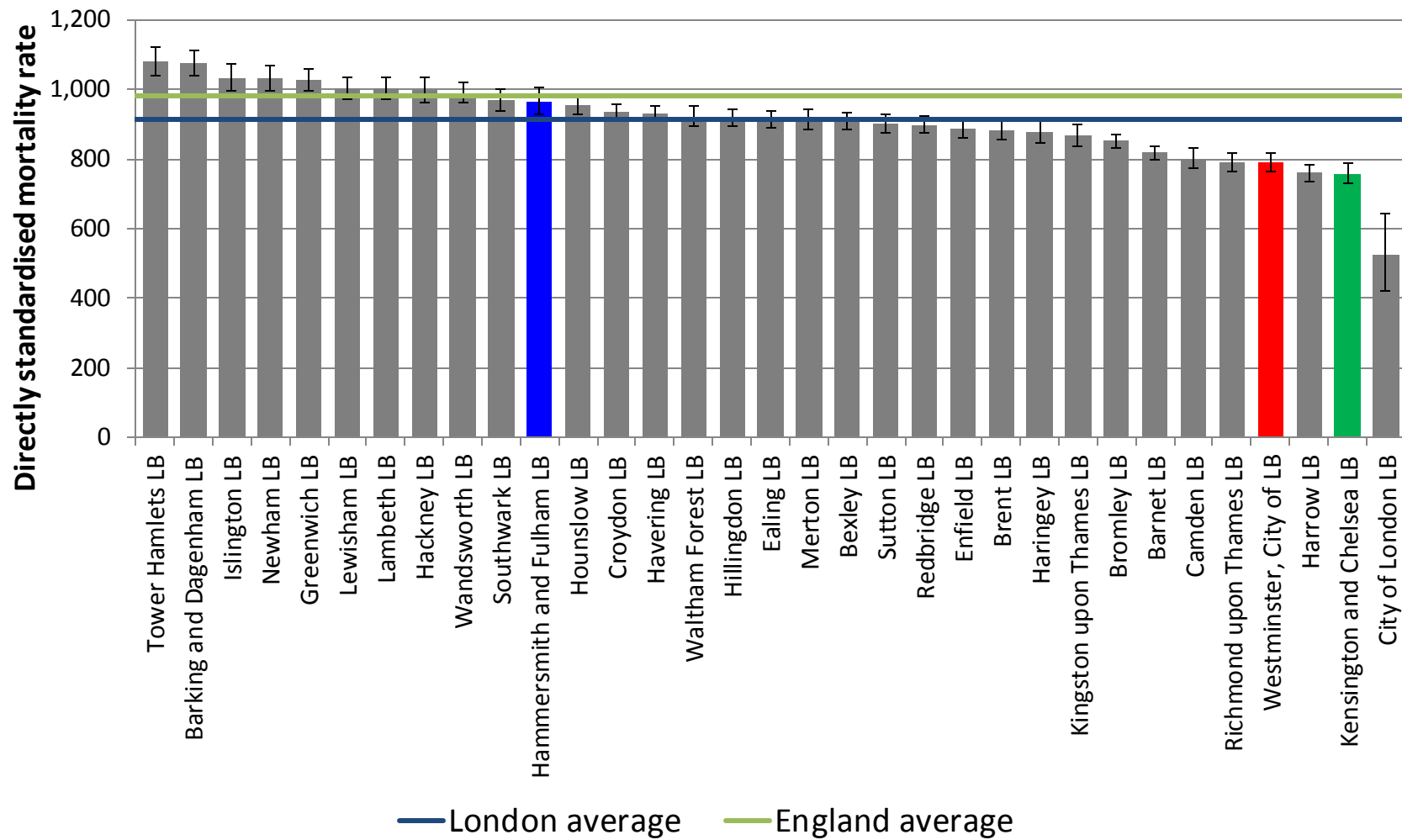
- London Borough of Hammersmith & Fulham
- Hammersmith & Fulham CCG
- Royal Borough of Kensington and Chelsea
- West London CCG
- Westminster City Council
- Central London CCG
- Queens Park and Paddington

Population

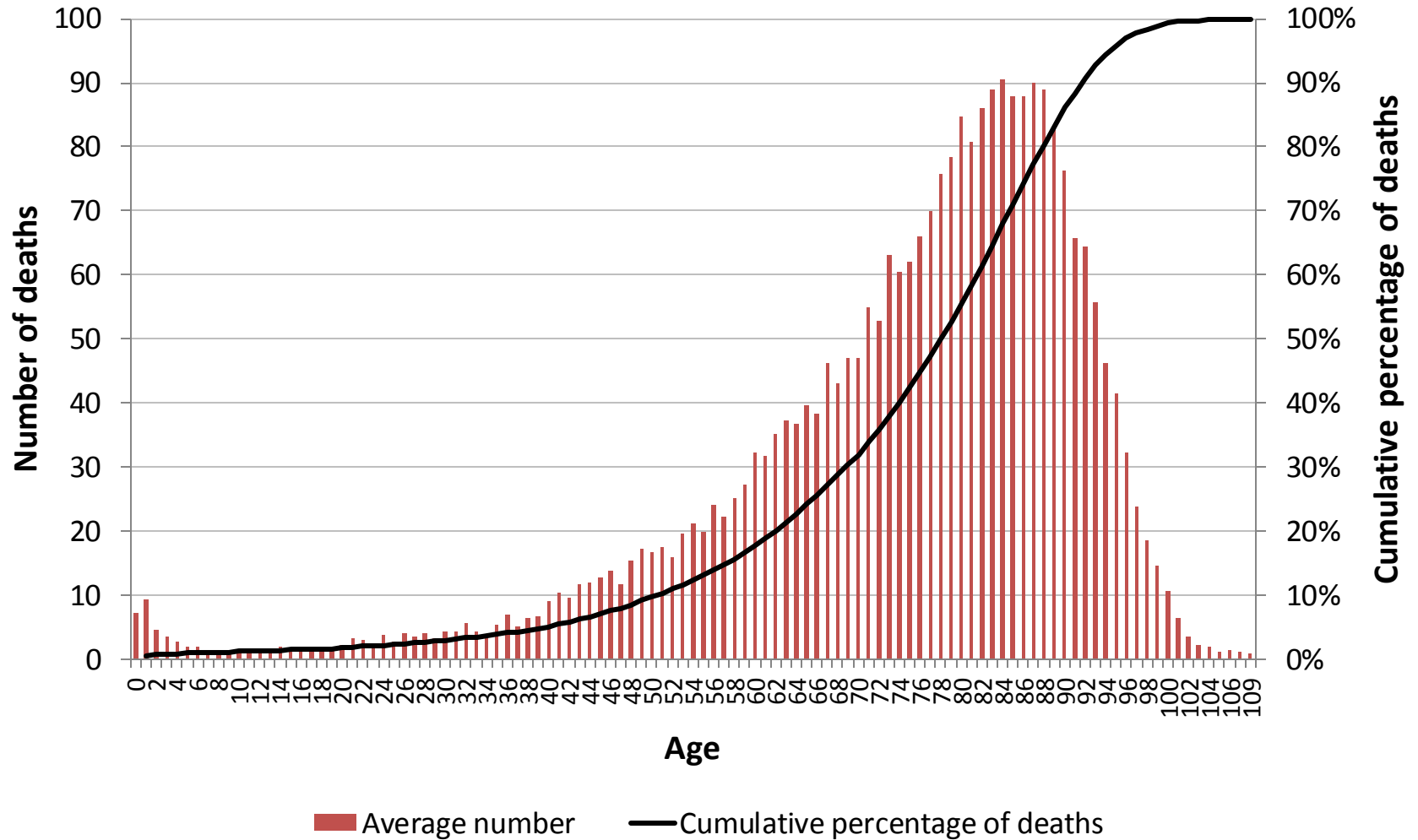
- Resident LA
- Resident CCG
- Registered
- People may die anywhere the country

➤ **All deaths by LA residents (registered or not registered) that occurred inside or outside the three boroughs**

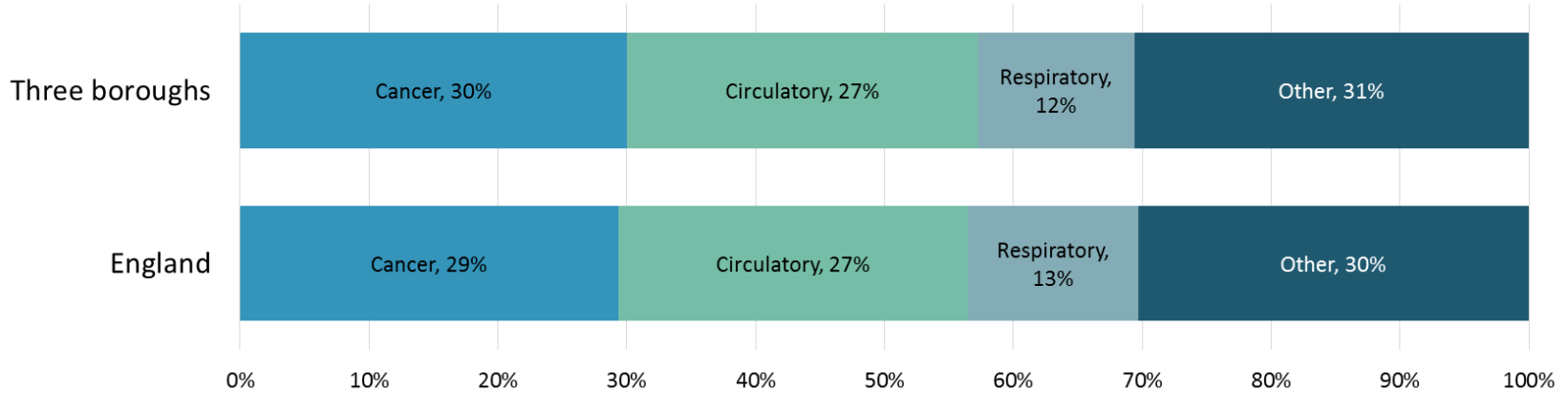
Mortality rate



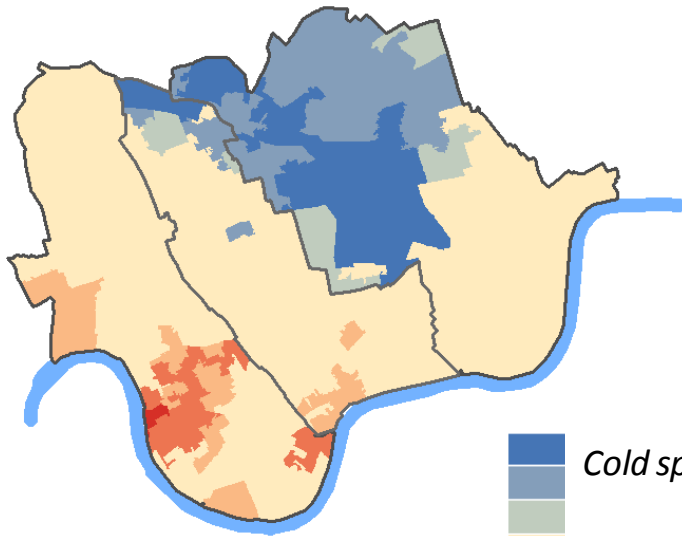
Age at death



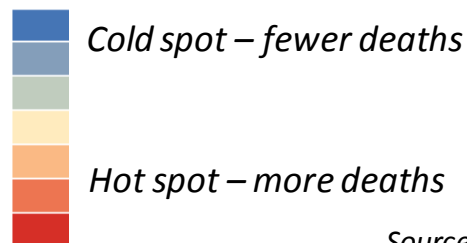
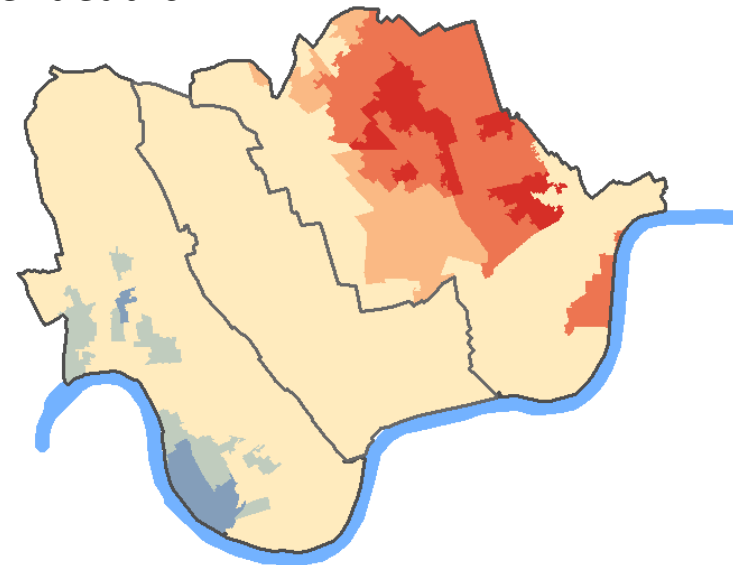
Causes of death



Cardiovascular disease deaths

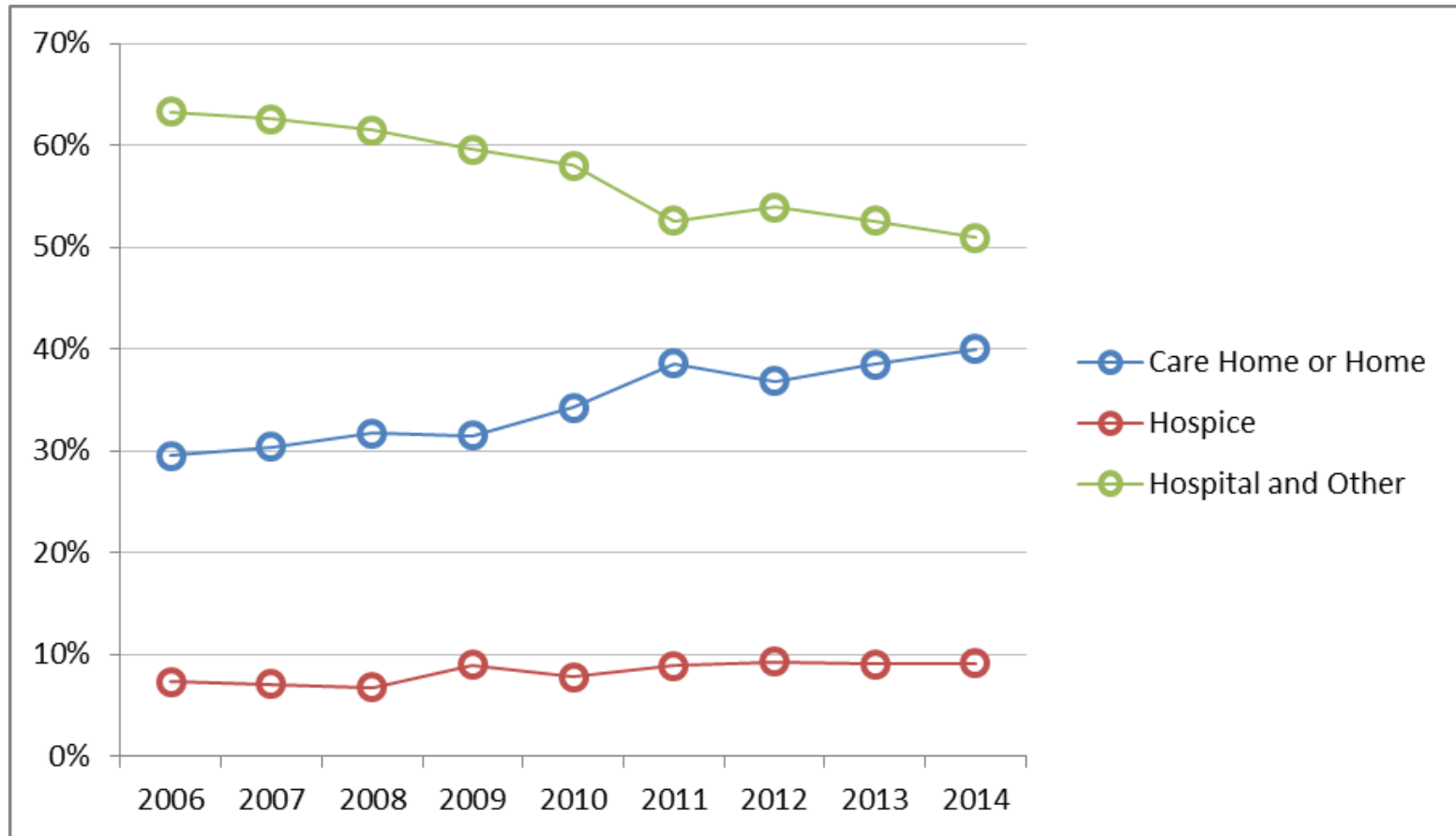


Cancer deaths



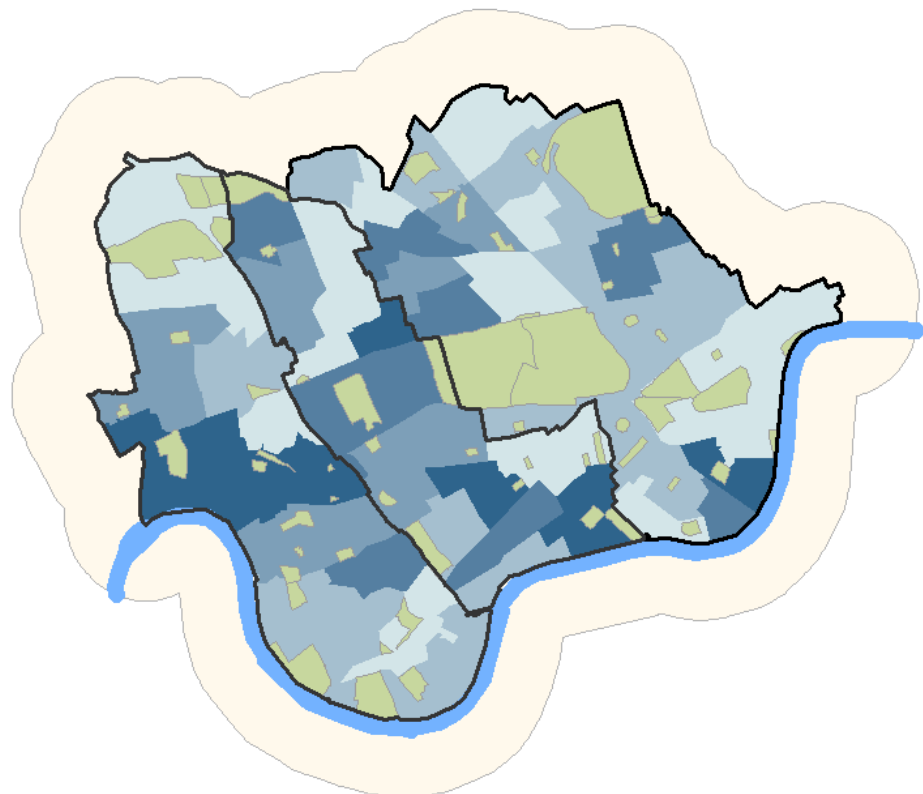
Place of death

Place of death



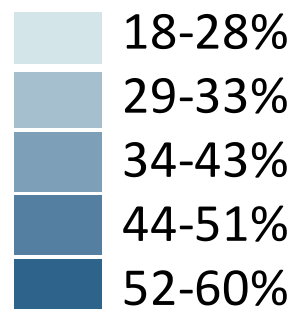
Source: All deaths, Primary Care Mortality Database, 2014

Place of death – variation in deaths in usual residence

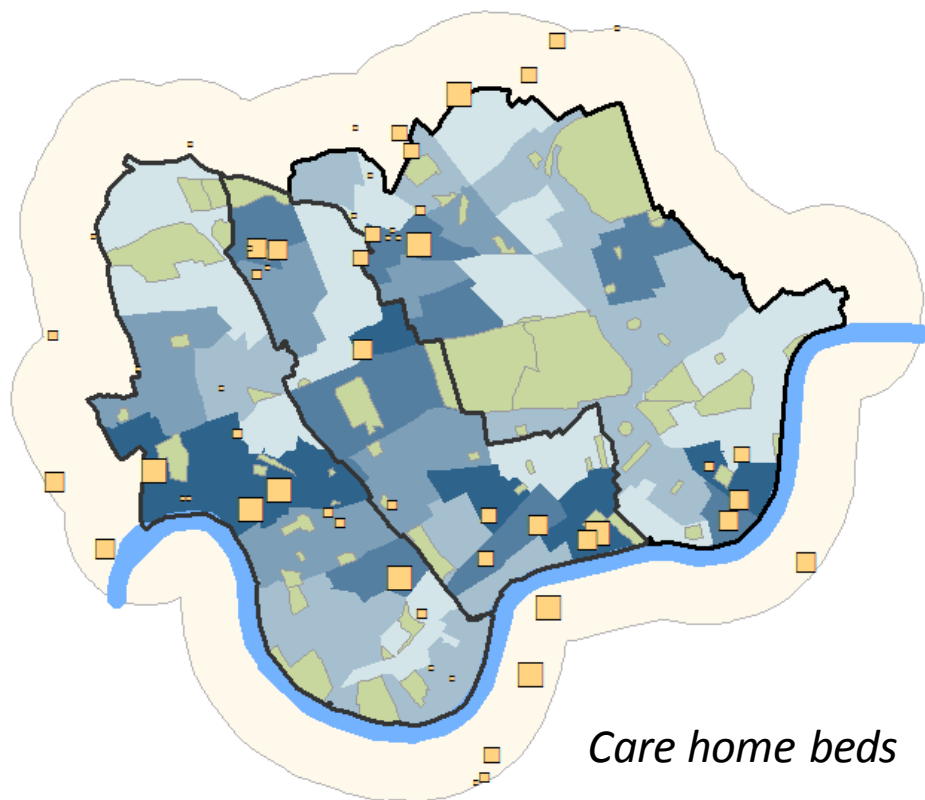


Percentage of deaths at home or in a care home ranges from 18% to 60%

Percentage of all deaths in usual residence



Place of death – variation in deaths in usual residence

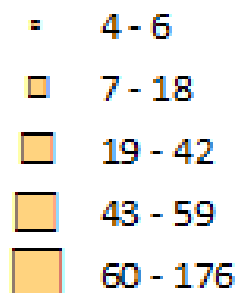


Percentage of deaths at home or in a care home ranges from 18% to 60%

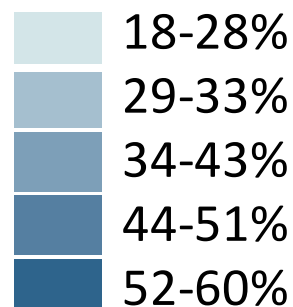
Variation partly explained by:

- Care home beds

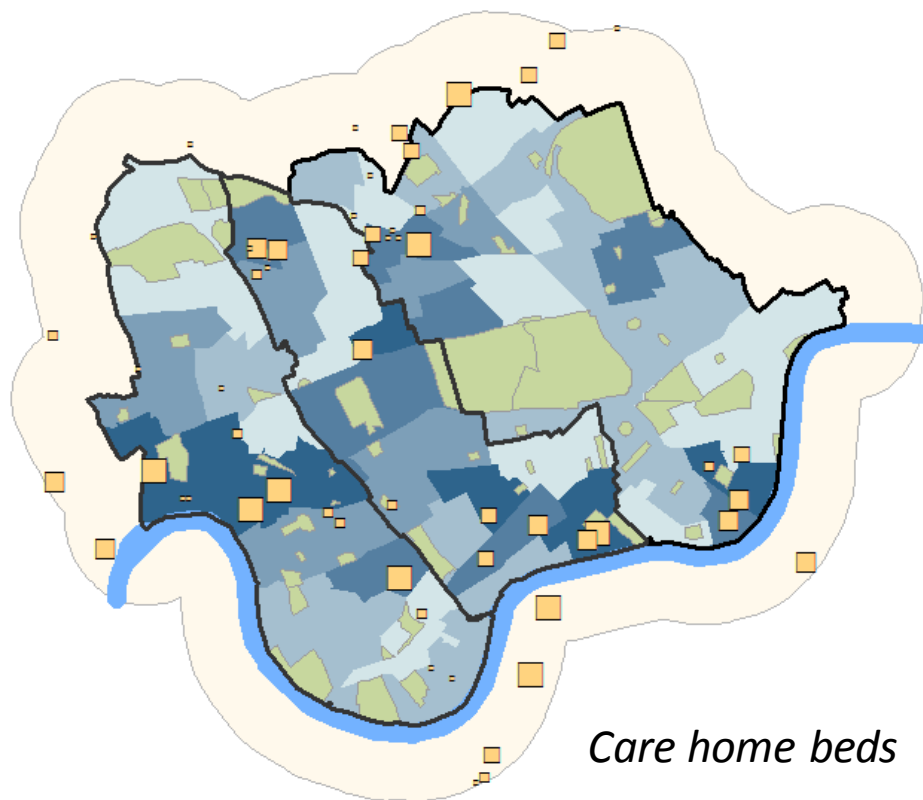
Care home beds



Percentage of all deaths in usual residence



Place of death – variation in deaths in usual residence



Care home beds

- 4 - 6
- 7 - 18
- 19 - 42
- 43 - 59
- 60 - 176

Percentage of deaths at home or in a care home ranges from 18% to 60%

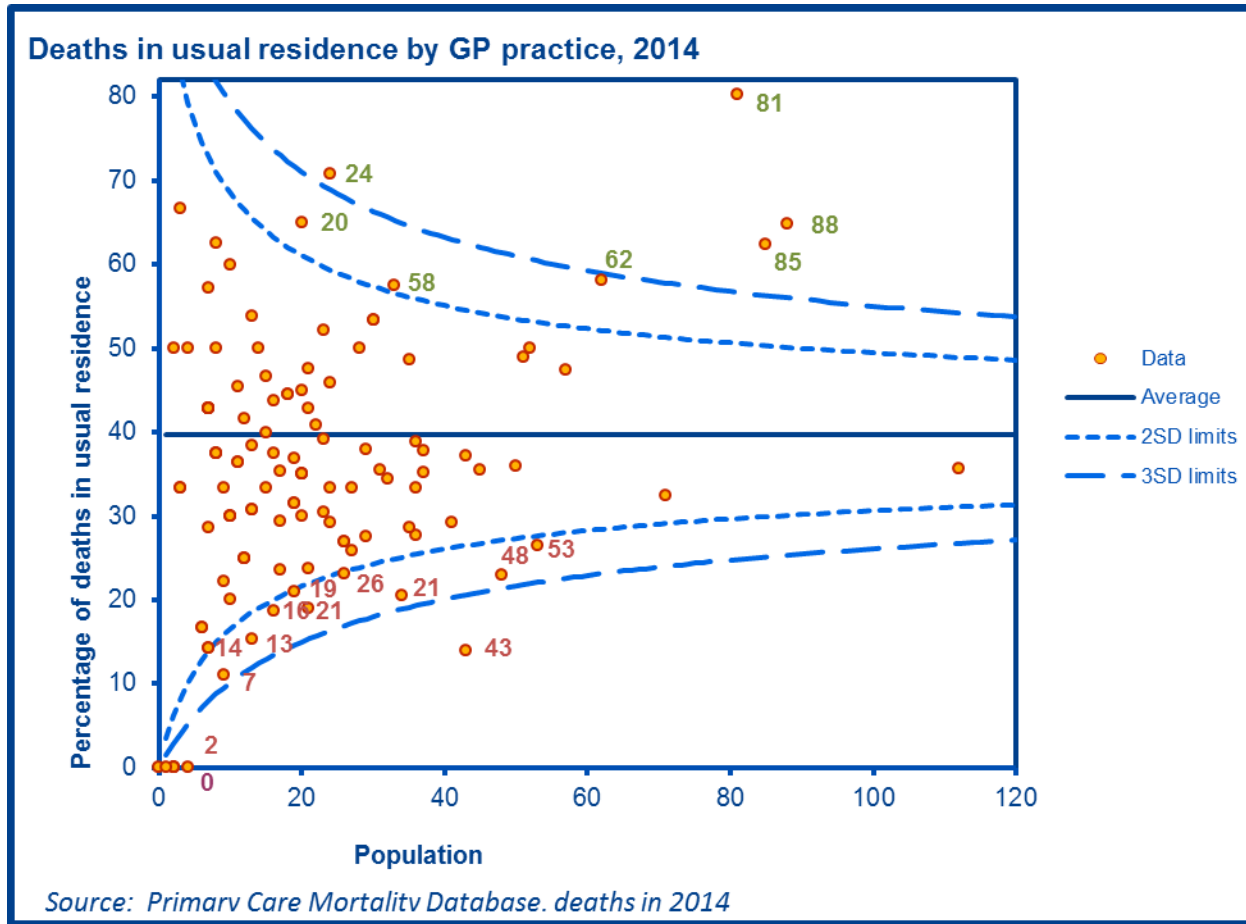
Variation partly explained by:

- Care home beds
- Higher death rate
- Older population

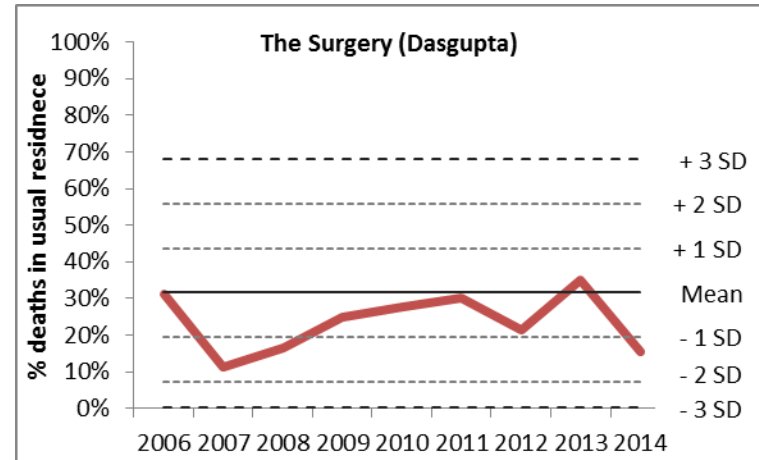
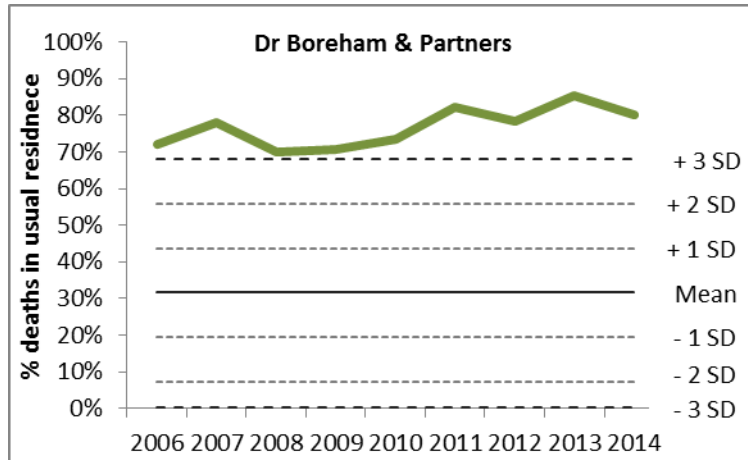
- Not significantly associated with median age at death, cause of death or deprivation

- Only 7% of the variation can be explained

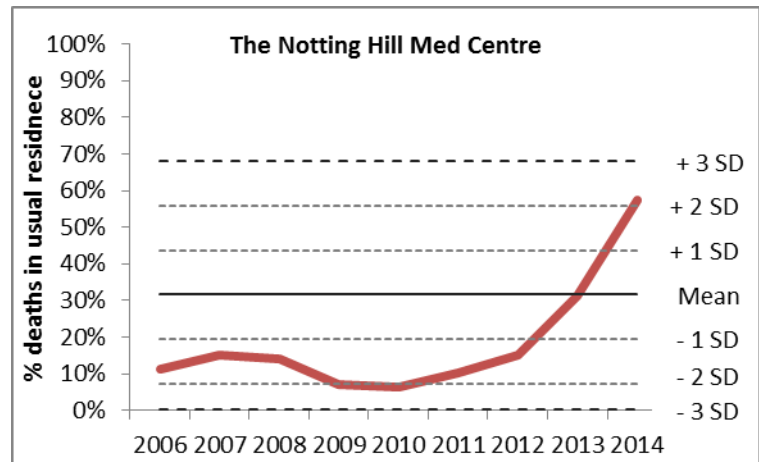
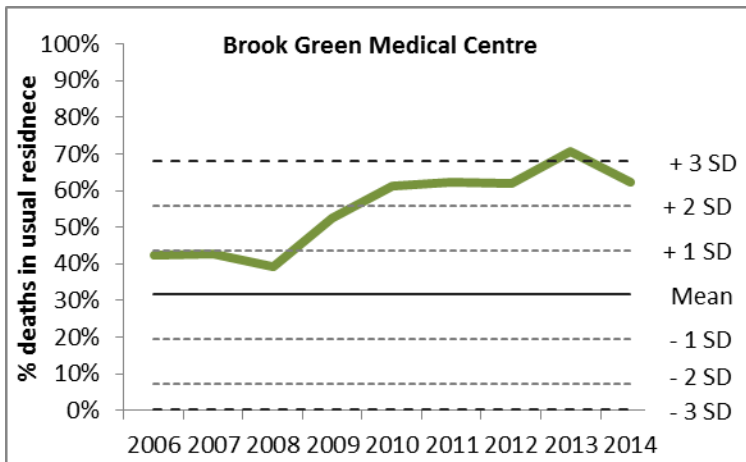
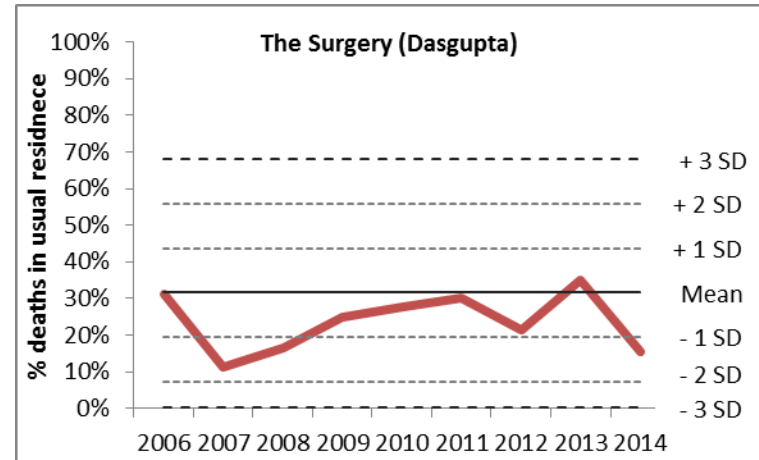
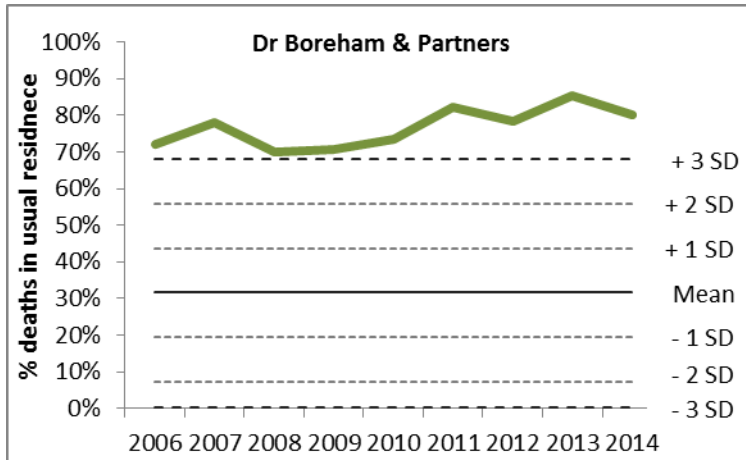
Place of death – by GP practice



Place of death – by GP practice



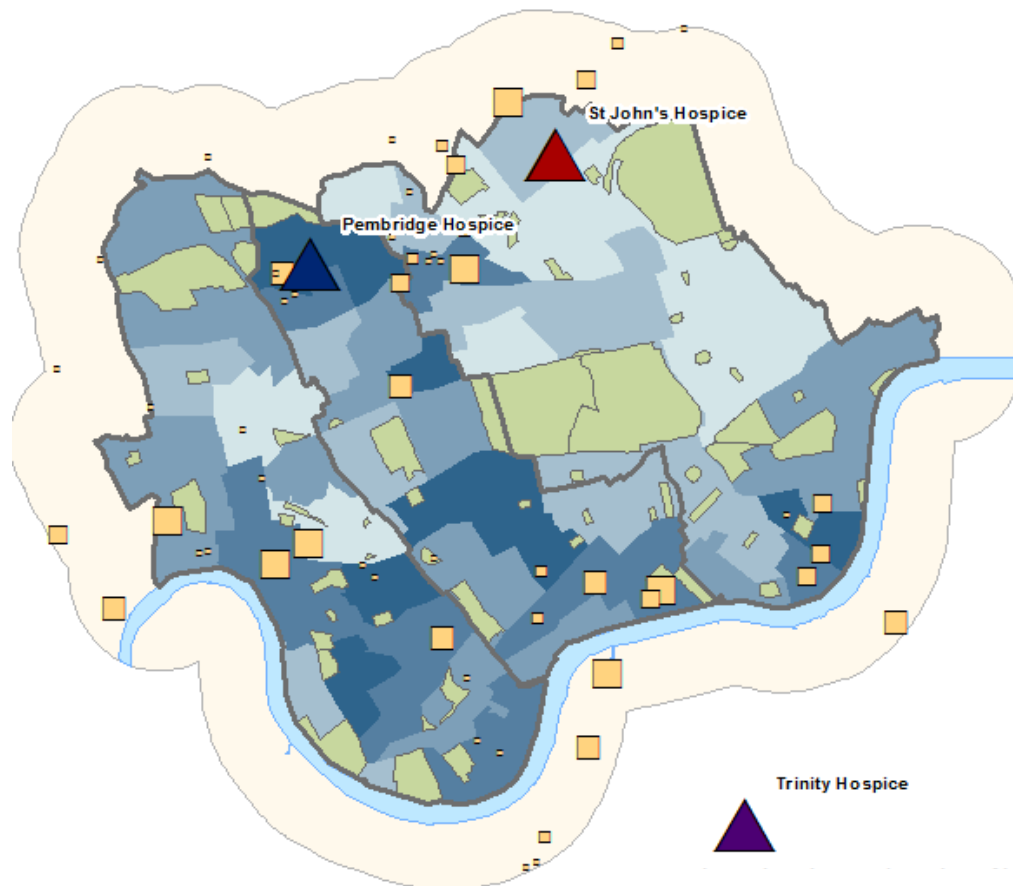
Place of death – by GP practice



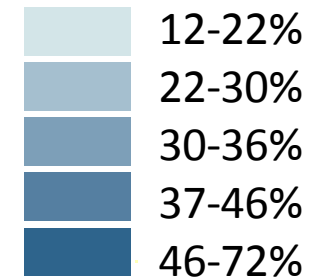
Source: Primary Care Mortality Database, 2014

Deaths among hospice patients

Deaths among hospice patients

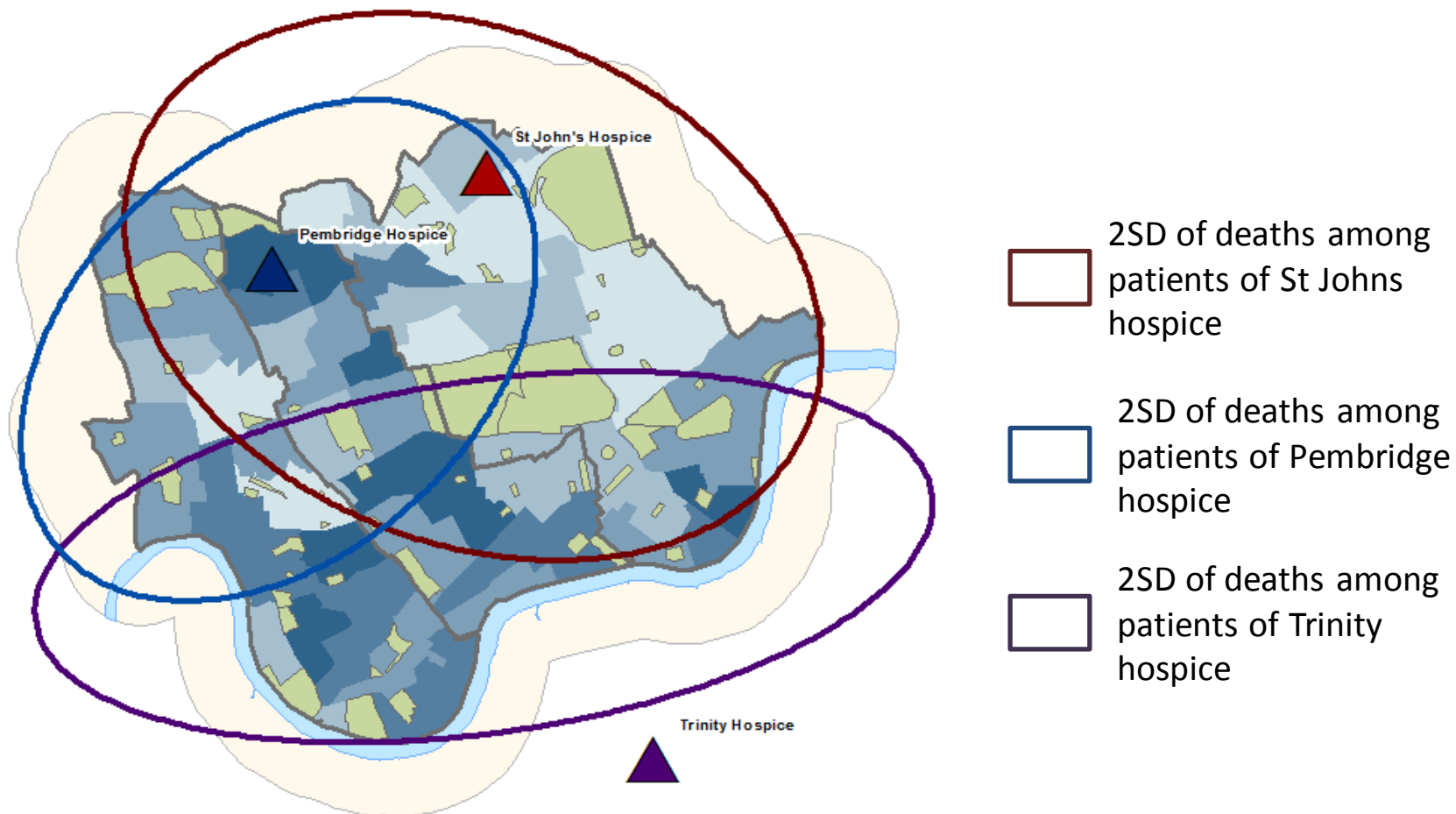


Percentage of all deaths that are hospice patients



Source: Deaths by patients of the three hospices (data provided by hospices) as a proportion of all deaths (Primary Care Mortality Database), Sept 2013 – Aug 2014

Deaths among hospice patients

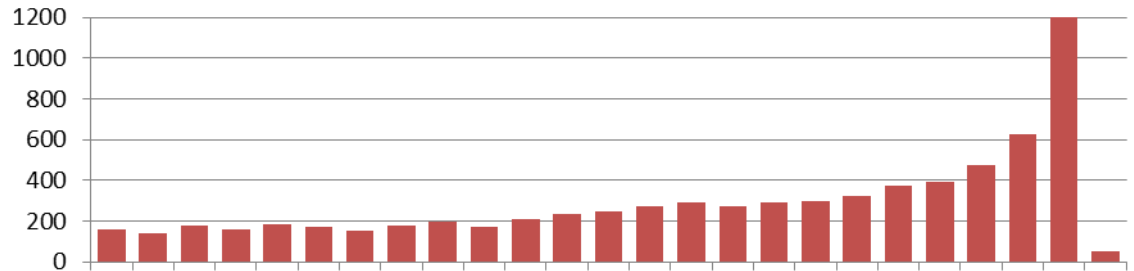


Source: Deaths by patients of the three hospices (data provided by hospices) as a proportion of all deaths (Primary Care Mortality Database), Sept 2013 – Aug 2014

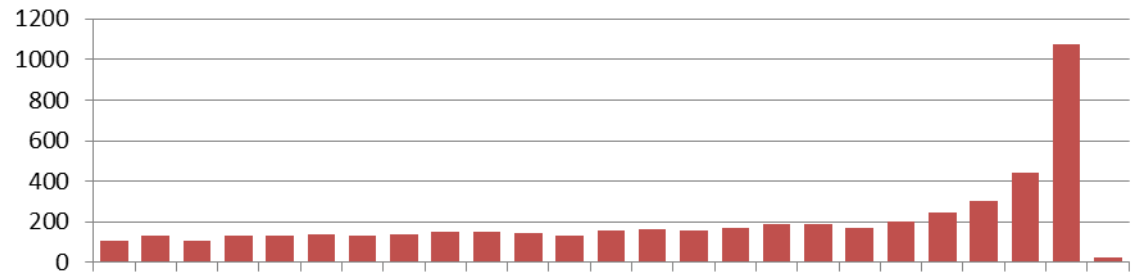
Deaths in hospital

Deaths in hospital – activity before death in hospital

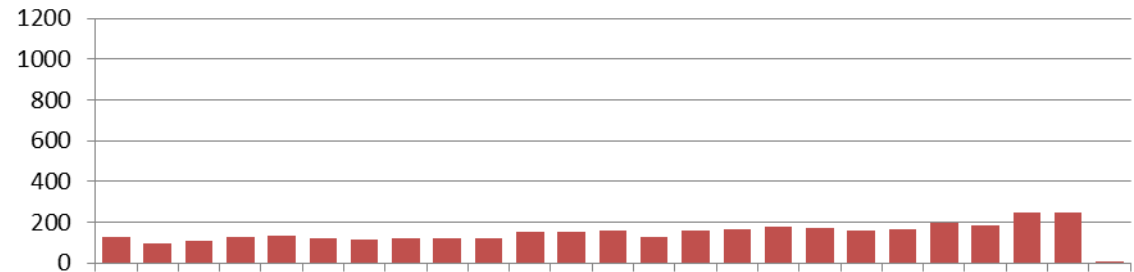
Inpatient admissions



A&E attendances



Outpatient attendances



2 years
before
death

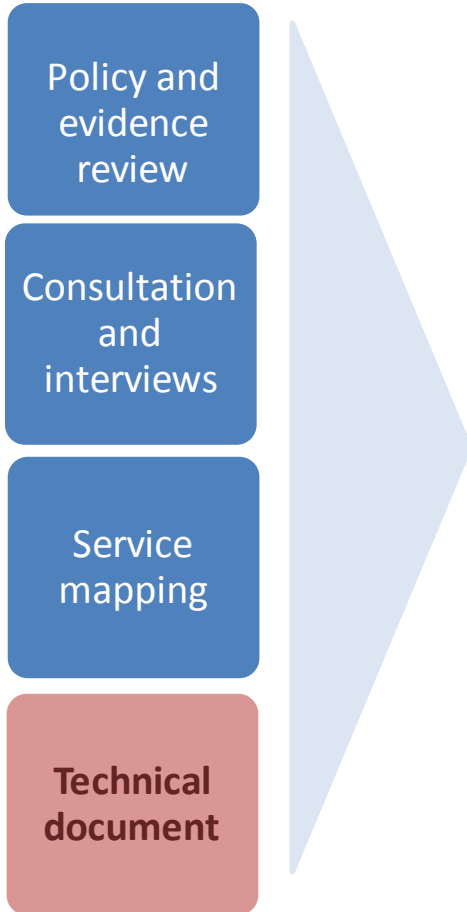


Time (months)

Month
before
death

End of life care JSNA

End of life care JSNA - Recommendations



End of life care JSNA - Recommendations



Find the full JSNA and technical document here:

<http://jsna.info/endoflifecare>

Rianne van der Linde

rvanderlinde@westminster.gov.uk

London Boroughs of
Hammersmith and Fulham
Kensington and Chelsea
Westminster